

Thickness Gages

SERIES 547, 7

The Thickness Gages offer a quick and efficient means of inspection with their convenient grip handle, thumb trigger and spring-loaded spindle. The various models cover a wide range of applications.

FEATURES

- Wide range of applications with various types of measuring faces (on the spindle and anvil).

Flat Anvil Type

Standard Type / Digital



Deep Throat Type / Digital



Deep Throat Type / Dial

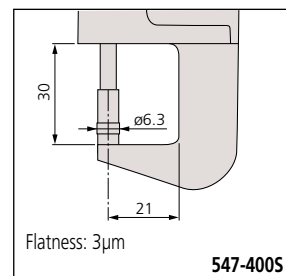


High Accuracy Type / Digital



- The digital models incorporate Mitutoyo's popular ID-C and ID-S Series Digimatic Indicators to provide error-free LCD readings as well as data output for SPC analysis.
- **547-4005** is ideally suited for measuring thicknesses of paper, film, wire, sheet metal and similar materials.

DIMENSIONS



Technical Data

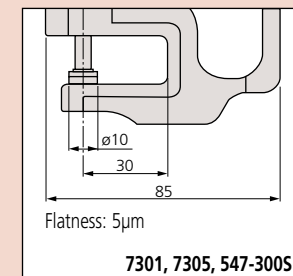
Function of Digital Models

- IDS Types
- ON/OFF
 - Inch / mm Conversion
 - Origin
 - ±Direction Changeover
 - SPC Output
 - Battery Life: 20,000 hrs
 - Power Supply: Silver Oxide Cell (SR-44 1pc.)

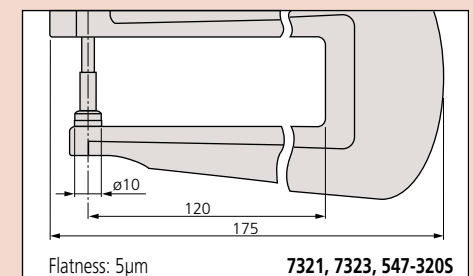
IDC Types

- ON/OFF
- Inch / mm Conversion
- Zero / ABS
- ±Direction Changeover
- SPC Output
- Battery Life: 5,000 hrs
- Power Supply: Silver Oxide Cell (SR-44 1pc.)
- Preset
- Provides GO / ±NG Judgement
- Face Rotates 330°

DIMENSIONS



Unit: mm



Thickness Gages

SERIES 547, 7

Optional Accessories

- 905338:** SPC cable (40" / 1m) for digital type
- 905409:** SPC cable (80" / 2m) for digital type
- 902794:** Spindle lifting lever for IDS digimatic type (stroke .5" / 12.7mm)
- 21AZB149:** Spindle lifting lever for digimatic and dial thickness gage (stroke .5" / 12.7mm)
- 21AZB150:** Spindle lifting lever for dial indicator (stroke 1" / 25.4mm)

Flat Anvil Type

SPECIFICATIONS

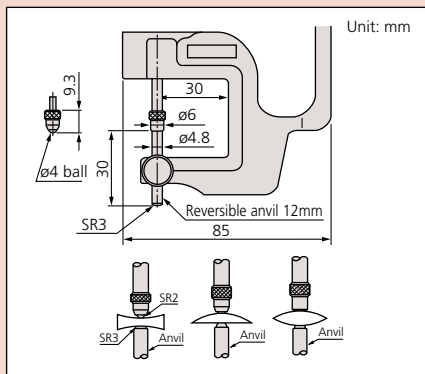
Inch/Metric		Digital Type			
Range	Order No.	Resolution	Accuracy	Measuring force	Indicator
0 - .47" / 0 - 12mm	547-500S*	.0005"/0.01mm	±.001"	1.5N or less	Digimatic IDS
0 - .47" / 0 - 12mm	547-520S*	.0005"/0.01mm	±.001"	1.5N or less	Digimatic IDS
0 - .47" / 0 - 12mm	547-526S*	.0001"/0.001mm	±.0002"	1.5N or less	Digimatic IDS
0 - .4" / 0 - 10mm	547-300S*	.0005"/0.01mm	±.001"	1.5N or less	Digimatic IDC
0 - .4" / 0 - 10mm	547-320S*	.0005"/0.01mm	±.001"	1.5N or less	Digimatic IDC
0 - .47" / 0 - 12mm	547-400S	.00005"/0.001mm	±.00015"	3.5N or less	Digimatic IDC

* Ceramic Spindle/Anvil

Inch		Dial Type			
Range	Order No.	Graduation	Accuracy	Measuring force	Remarks
0 - .05"	7326S	.0001"	±.0002"	1.4N or less	Fine dial reading, ceramic spindle/anvil
0 - .5"	7300S	.001"	±.001"	1.4N or less	Standard, ceramic spindle/anvil
0 - 1"	7304S	.001"	±.002"	2.0N or less	Standard, ceramic spindle/anvil
0 - 1"	7322S	.001"	±.002"	2.0N or less	Deep throat, ceramic spindle/anvil

Metric		Dial Type			
Range	Order No.	Graduation	Accuracy	Measuring force	Remarks
0 - 1mm	7327	0.001mm	±5µm	1.4N or less	Fine dial reading, ceramic spindle/anvil
0 - 10mm	7301	0.01mm	±15µm	1.4N or less	Standard, ceramic spindle/anvil
0 - 20mm	7305	0.01mm	±20µm	2.0N or less	Standard, ceramic spindle/anvil
0 - 10mm	7321	0.01mm	±15µm	1.4N or less	Deep throat, ceramic spindle/anvil
0 - 20mm	7323	0.01mm	±22µm	2.0N or less	Deep throat, ceramic spindle/anvil

DIMENSIONS



Lens thickness measurement (reverse anvil)



SPECIFICATIONS

Inch/Metric		Digital Type			
Range	Order No.	Resolution	Accuracy	Measuring force	Indicator
0 - .47" / 0 - 12mm	547-512	.0005"/0.01mm	±.001"	1.5N or less	Digimatic IDS
0 - .47" / 0 - 12mm	547-312S	.0005"/0.01mm	±.001"	1.5N or less	Digimatic IDC

Inch		Dial Type			
Range	Order No.	Graduation	Accuracy	Measuring force	Remarks
0 - .5"	7312S	.001"	±.001"	1.4N or less	Lens thickness

Metric		Dial Type			
Range	Order No.	Graduation	Accuracy	Measuring force	Remarks
0 - 10mm	7313	0.01mm	±15µm	1.4N or less	Lens thickness

Thickness Gages

SERIES 547, 7

Tube thickness measurement



SPECIFICATIONS

Inch/Metric Digital Type

Range	Order No.	Resolution	Accuracy	Measuring force	Indicator
0 - .47" / 0 - 10mm	547-561	.0005"/0.01mm	±.001"	1.5N or less	Digimatic IDS
0 - .47" / 0 - 12mm	547-361S	.0005"/0.01mm	±.001"	1.5N or less	Digimatic IDC

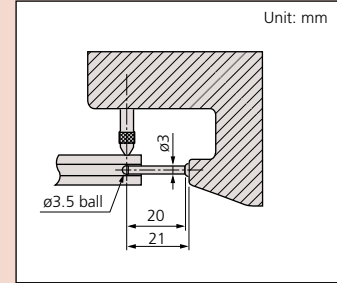
Inch Dial Type

Range	Order No.	Graduation	Accuracy	Measuring force	Remarks
0 - .5"	7361S	.001"	±.001"	1.4N or less	Tube thickness

Metric Dial Type

Range	Order No.	Graduation	Accuracy	Measuring force	Remarks
0 - 10mm	7360	0.01mm	±15µm	1.4N or less	Tube thickness

DIMENSIONS



Optional Accessories

- 905338: SPC cable (40" / 1m) for digital type
- 905409: SPC cable (80" / 2m) for digital type
- 902794: Spindle lifting lever for IDS digimatic type (stroke .5" / 12.7mm)
- 21AZB149: Spindle lifting lever for digimatic and dial thickness gage (stroke .5" / 12.7mm)
- 21AZB150: Spindle lifting lever for dial indicator (stroke 1" / 25.4mm)

Groove thickness measurement (Blade anvil type)



SPECIFICATIONS

Inch/Metric Digital Type

Range	Order No.	Resolution	Accuracy	Measuring force	Indicator
0 - .47" / 0 - 12mm	547-516	.0005"/0.01mm	±.001"	1.5N or less	Digimatic IDS
0 - .47" / 0 - 10mm	547-316S	.0005"/0.01mm	±.001"	1.5N or less	Digimatic IDC

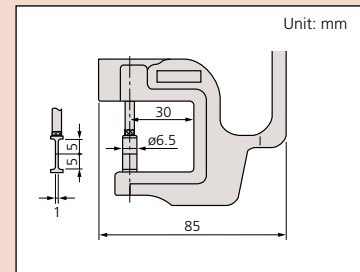
Inch Dial Type

Range	Order No.	Graduation	Accuracy	Measuring force	Remarks
0 - .5"	7316S	.001"	±.001"	1.4N or less	Groove thickness

Metric Dial Type

Range	Order No.	Graduation	Accuracy	Measuring force	Remarks
0 - 10mm	7315	0.01mm	±15µm	1.4N or less	Groove thickness

DIMENSIONS



Quick-Mini

SERIES 700

A compact comparator designed for carrying convenience, it is very suited for quick inspection of paper thickness, leather, wires, plastic parts, etc. The digital display provides error-free reading with 0.01 mm / .0005" resolution.

FEATURES

- Measuring force less than 2N.
- Supplied in fitted plastic case.



700-118-20

Technical Data

Accuracy: Refer to the list of specifications.
 Resolution: 0.01mm or .0005"/0.01mm
 Display: LCD
 Battery: SR44 (1 pc.), **938882**
 Battery life: Approx. 2 years under normal use

Function

Zero-setting, Data hold, Power ON/OFF, inch/mm conversion (on inch/metric models only)



SPECIFICATIONS

Metric		
Range	Order No.	Accuracy
0 - 12mm	700-119-20	±0.02mm

Inch/Metric		
Range	Order No.	Accuracy
0 - .5"/0 - 12.7mm	700-118-20	±.001"

DIMENSIONS AND MASS

